



mailonizer

**Installation Manual
User Manual
Best Practise**

Version 1.2.0

Date: 08.11.2008
Version: 1.6
Last Change: 05.05.09

1 contents

1	contents	2
2	History facts	5
3	reference papers	5
4	provided OS versions	5
5	provided Outlook versions	5
6	installation manual	6
6.1	run setup.exe	6
6.1.1	restore point	6
6.2	manual	6
6.3	register	6
6.4	first contact	7
6.5	second contact	8
6.6	uninstall sequence	9
7	user manual	10
7.1	End user license agreement (EULA)	10
7.2	startup sequence	10
7.2.1	EXTREME VERSION	11
7.2.2	PRO VERSION	11
7.2.3	BASE VERSION	12
7.2.4	FREEWARE VERSION	12
7.2.5	ORDER	13
7.2.6	end	13
7.3	Main window	14
7.3.1	buttons	14
7.3.1.1.	Start View	14
7.3.1.2.	Stop View	14
7.3.1.3.	Help	15

7.3.1.4. Hide	15
7.3.1.5. Save complete inbox	15
7.3.1.6. Save complete outbox	15
7.3.1.7. Tracking	15
7.3.1.8. Options	15
7.3.2 options	16
7.3.2.1. save incoming mails	16
7.3.2.2. save outgoing mails	16
7.3.2.3. autostart	16
7.3.2.4. runs in systray	16
7.3.2.5. project tracking	16
7.3.2.6. save path for mails	17
7.3.2.7. EXTREME license for 10 filter and more	17
7.3.2.8. PRO license for 5 filter	18
7.3.2.9. BASE license	18
7.4 project tracking	20
7.4.1 project tracking form	20
7.4.1.1. filter name	20
7.4.1.2. filter type	20
7.4.1.2.1. pattern search	21
7.4.1.2.2. email search	21
7.4.1.2.3. exact multi search	21
7.4.1.2.4. near multi search	21
7.4.1.3. track incoming mails	21
7.4.1.4. track outgoing mails	21
7.4.1.5. filter active	21
7.4.1.6. type pattern to trigger the filter	21
7.4.1.7. type pattern to finish the filter	22
7.4.1.8. show folder	22
7.4.1.9. set folder	22
7.4.1.10. rename filter	22
7.4.1.11. number of filters	22
7.4.2 best practise	23
7.4.3 Examples for filtering	23
7.4.4 keyword search	24
7.4.5 exact multi search	24
7.4.6 near multi search	24
7.5 language settings	25
7.5.1 change language	25

8	Constraints	25
8.1	scheduler	26
8.2	Unhandled Outlook objects	26
8.3	cpu usage	26
8.4	limits	26
8.5	redemption.dll	26
8.6	mail in mail	26
8.7	Outlook versions	26
8.8	OS versions	26
8.9	64 bit OS	26
8.10	Subfolders	26
8.11	keyword lists	26
8.12	Blackberry Usage	27
9	Known problems	28
9.1	setup.exe is blocked	28
9.2	old harddiscs	28
9.3	Network space	28
9.4	send / receive	28

2 History facts

index	changes	cause	who	Date
1	first version		DE	18.07.07
2	logo updated		DE	04.09.07
3	New Version 1.2.0			
4	EXTREME Version added		DE	01.03.09
5	language added		DE	24.03.09
6	Vista support		DE	04.05.09

3 reference papers

No.	document	Hint
-----	----------	------

4 provided OS versions

mailonizer provides Windows XP SP1-SP3.

mailonizer provides Windows Vista SP1.

5 provided Outlook versions

mailonizer provides Outlook 2000, 2002, XP, 2003 and 2007.

6 installation manual

We assume a setup.exe at temporary folder, e.g. c:\tmp.

To install *mailonizer* version 1.2.0 you need to do **1 step**.

6.1 run setup.exe

Run the setup file.

That' it !

(Thanks to the famous Z-Up Maker)

6.1.1 restore point

At the start of the setup *mailonizer* sets an restore point. With this and you can restore the system to the state before you installed *mailonizer*.

6.2 manual

At the end of the setup you may read this manual.

6.3 register

At the end of the setup you need to apply, that mailonizer will be registered. This step is in order to provide you best service.



mailonizer

email lost ?**We assume, this is a real problem for you !****Let mailonizer solve this problem finally !**

sorry, but you need to register this version first !

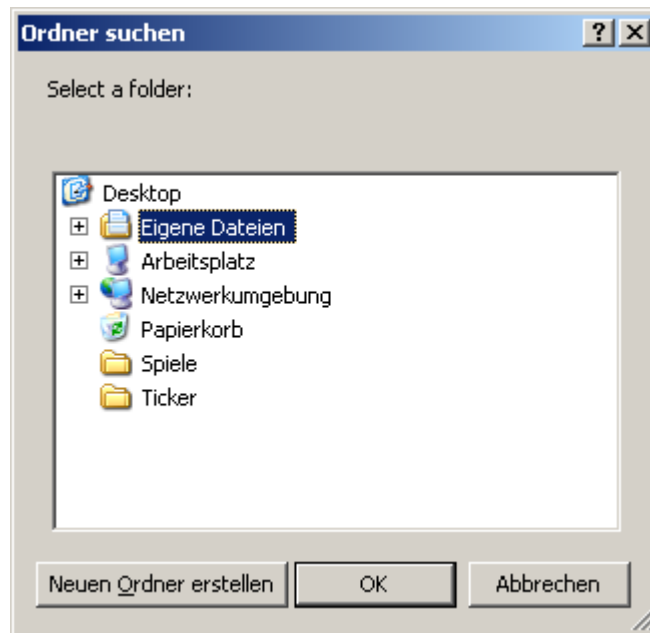
end

6.4 first contact

At the end of the setup **mailonizer** is started by default.

You need to choose a folder, where all your mails will be saved:





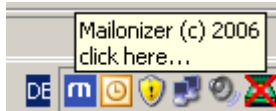
Now **mailonizer** will start to work:



6.5 second contact

You will recognize the following icon in the systray bar:





6.6 uninstall sequence

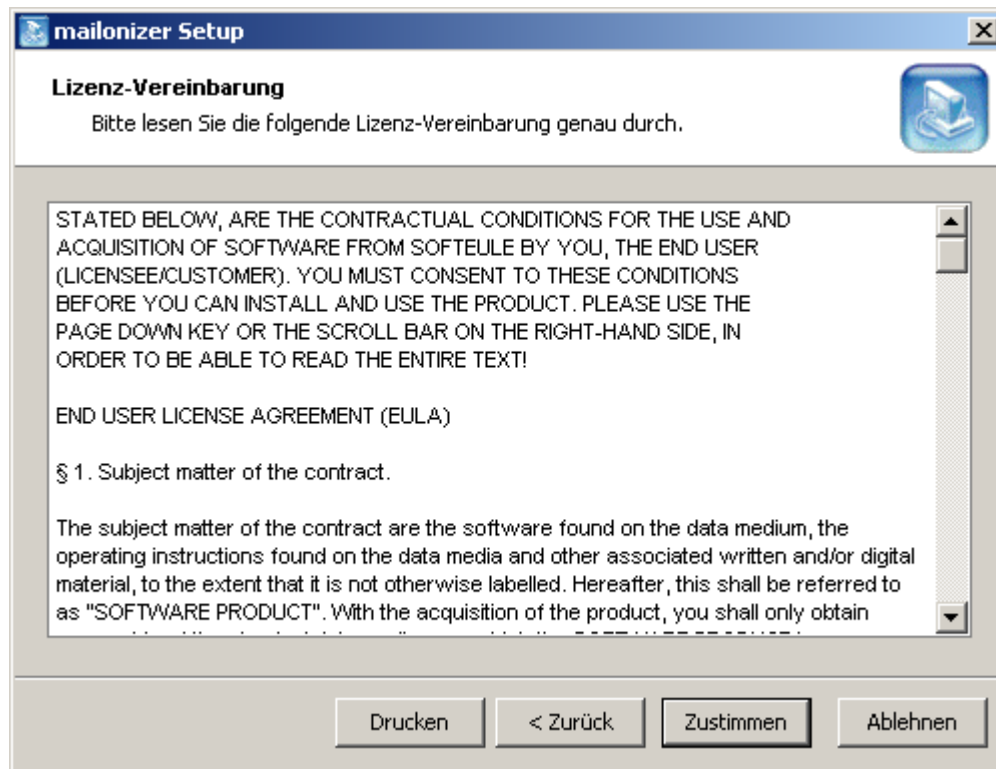
If you don't want to use **mailonizer** use the entry Start->Programme->Uninstall.

7 user manual

this pages will help you to use **mailonizer**. There are only a few functions you need to understand. Most of the program runs automatically in the background.

7.1 End user license agreement (EULA)

If you install **mailonizer**, you need to agree the end user license.



7.2 startup sequence

At the start sequence **mailonizer** shows a splash to show you some information.

7.2.1 EXTREME VERSION



This start sequence is a valid for the PRO version.

7.2.2 PRO VERSION



This start sequence is a valid for the PRO version.

7.2.3 BASE VERSION



This start sequence is a valid for the BASE version.

7.2.4 FREeware VERSION



This start sequence is a valid for the freeware version.

7.2.5 ORDER

If you need to have a full version without the mail limits and with more than 1 filter to track your mails, click "**Order Mailonizer now !**". This will lead you to our e-commerce partner, where you can get a license in shortest time: www.shareit.de

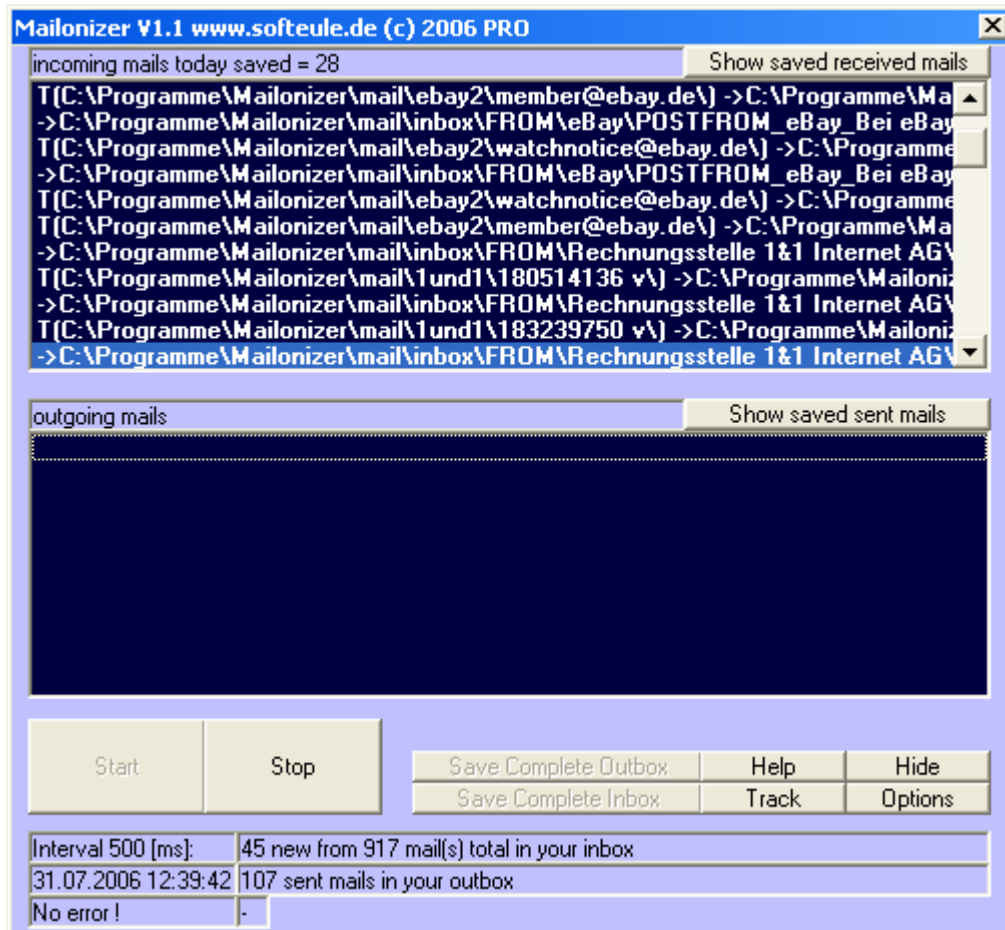


7.2.6 end

If you don't want to run *mailonizer* as a FREEWARE just click "**End**".

7.3 Main window

The main window is the common control center. From this point you can access all important features.



If you move the mouse over a item in the list, you will get further information about the mail. Each mail is handled in one row. If the mail is filtered as well, there is a second row starting with the character “T”.

7.3.1 buttons

let me explain you the features behind each button.

7.3.1.1. Start View

This lets the program start to control you outlook session. If you have chosen the option “**autostart**” (see options)

7.3.1.2. Stop View

This stops control of your outlook. If there are any incoming or outgoing mails, they are not handled by **mailonizer**.

7.3.1.3. Help

This shows the homepage with actual news.

7.3.1.4. Hide

This hides the main window.

7.3.1.5. Save complete inbox

This command will save all mails in the inbox folder, it's only available in the PRO version.

7.3.1.6. Save complete outbox

This command will save all mails in the outbox folder, it's only available in the PRO version.

7.3.1.7. Tracking

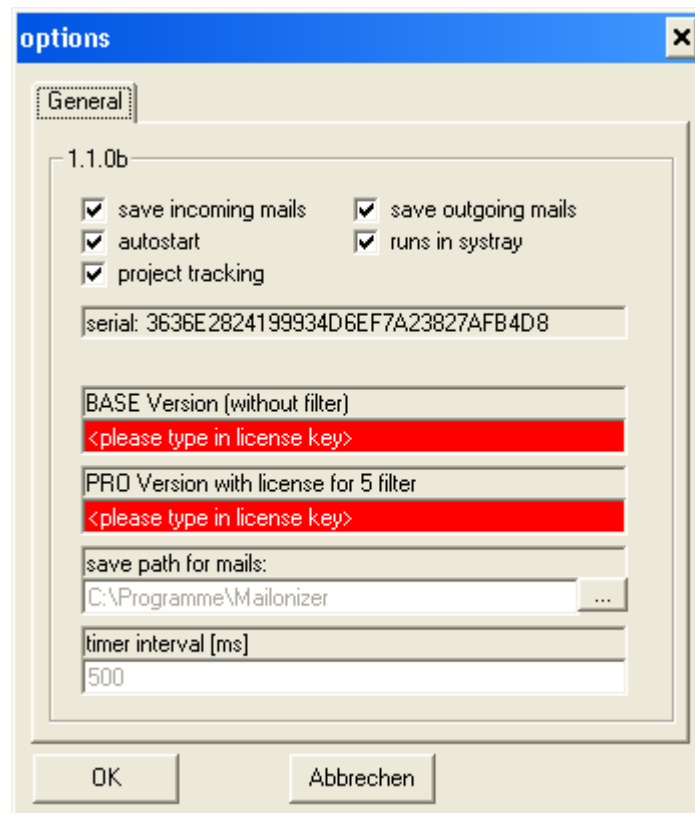
This command leads you to a form to customize your filter settings to track your mails. For further information see chapter "***project tracking***"

7.3.1.8. Options

This command will show you the option form.

7.3.2 options

With the following options you can control different functions



7.3.2.1. save incoming mails

this check box will enable the saving of unread mails in the inbox.

7.3.2.2. save outgoing mails

this check box will enable the saving of new mails in the sent box.

7.3.2.3. autostart

this will do the Start View command for you at program start. If you want to start the program manually, disable this.

7.3.2.4. runs in systray

this lets the program hide in the systray, if you want the program to be shown, disable this.

7.3.2.5. project tracking

this enables an important function to track mails. See chapter "**project tracking**". If you don't want to track mails, disable this.

7.3.2.6. save path for mails

this is the path where *mailonizer* save your email.

7.3.2.7. EXTREME license for 10 filter and more

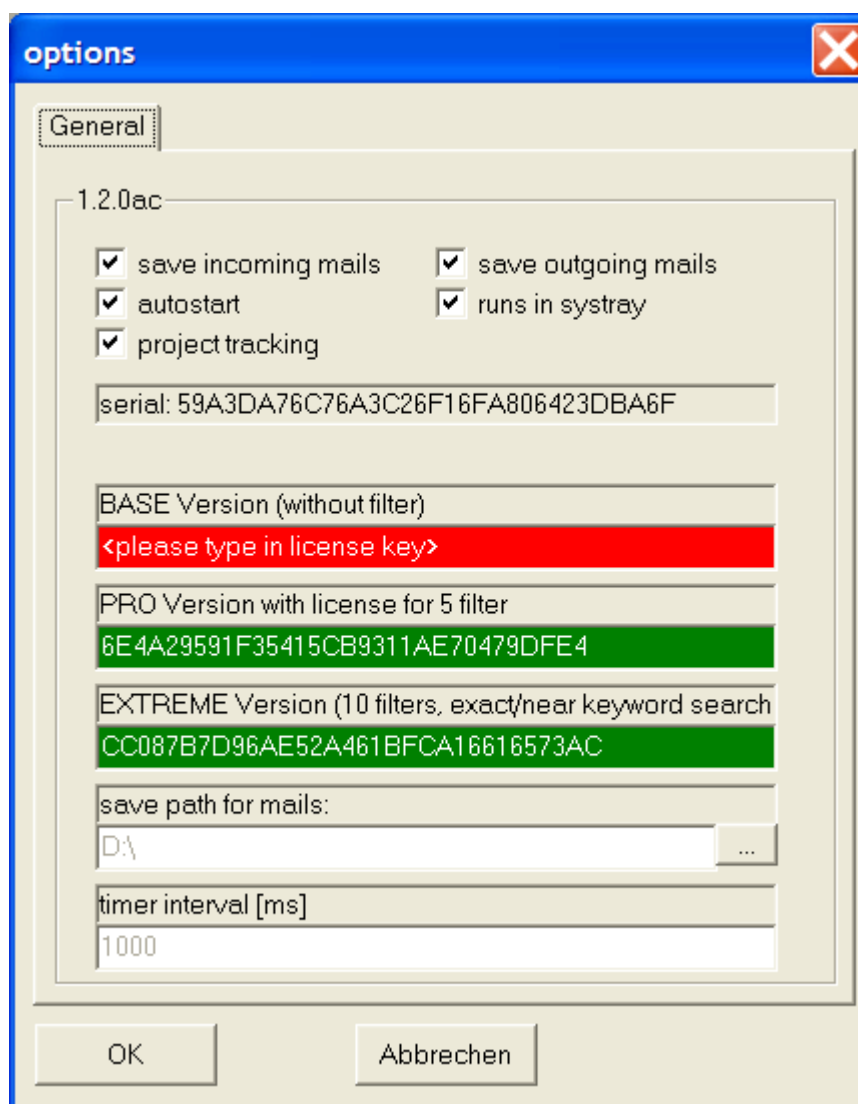
this is your license key, if available. If it's red the license key is denied, If it's green, the license key is accepted. License keys will be provided by email.

If you want to insert a license key

CC087B7D96AE52A461BFCA16616573AC

then copy the license into the field 'EXTREME Version ... ' and press 'OK'.

Please notice that a EXTREME license is only available with an PRO license. You won't get an EXTREME license stand alone.



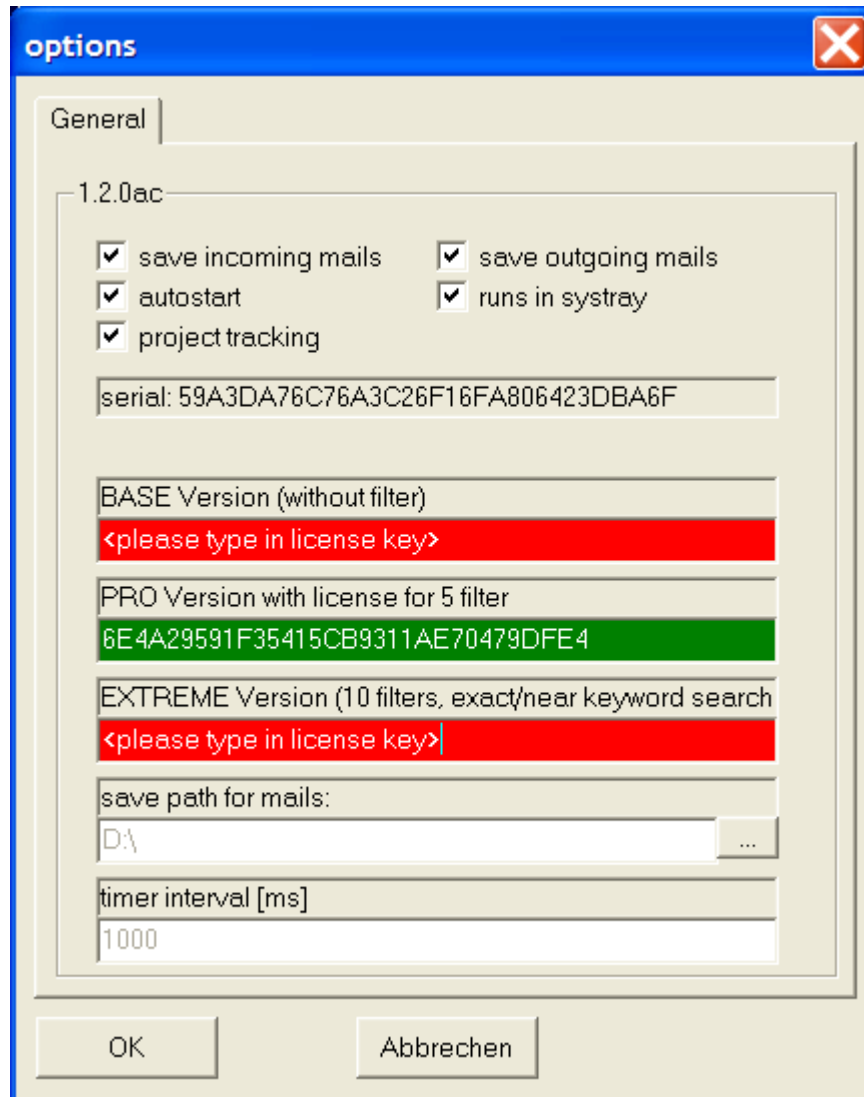
7.3.2.8. PRO license for 5 filter

this is your license key, if available. If it's red the license key is denied, If it's green, the license key is accepted. License keys will be provided by email.

If you want to insert a license key

6E4A29591F35415CB9311AE70479DFE4

then copy the license into the field 'PRO Version ... ' and press 'OK'.



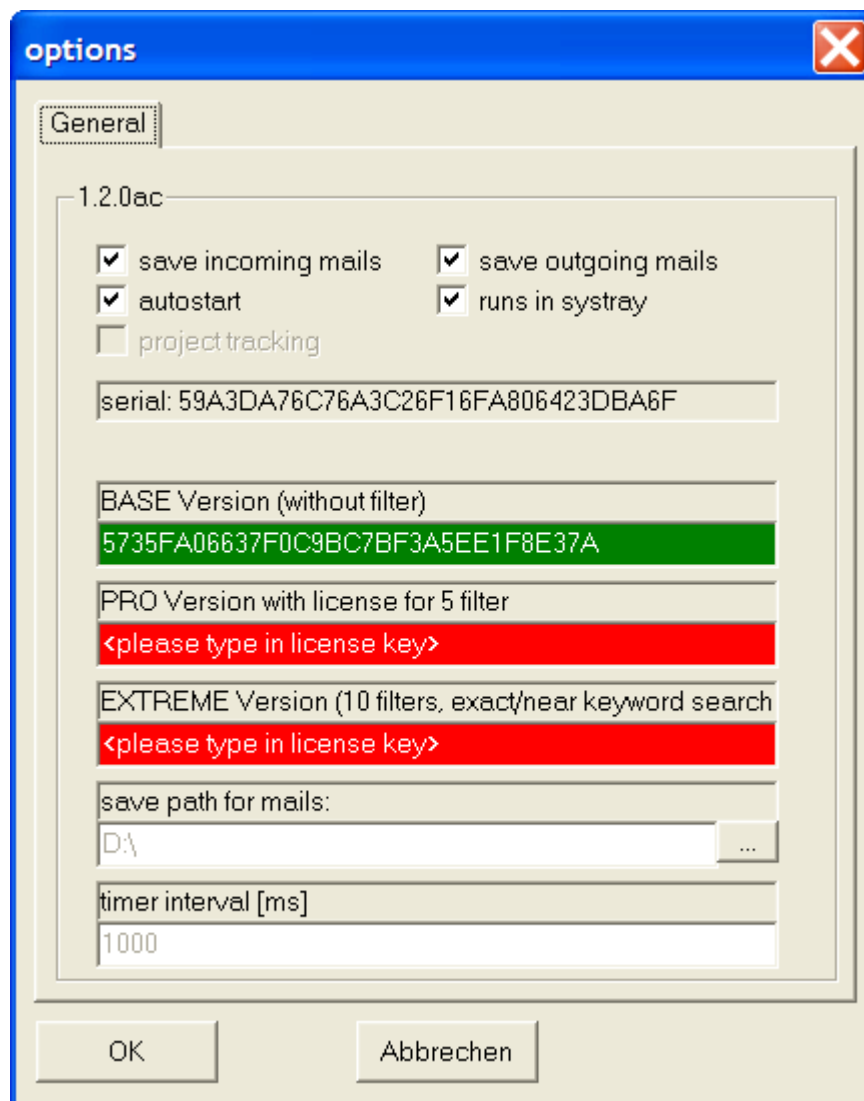
7.3.2.9. BASE license

this is your license key, if available. If it's red the license key is denied, If it's green, the license key is accepted. License keys will be provided by email.

If you want to insert a license key

5735FA06637F0C9BC7BF3A5EE1F8E37A

then copy the license into the field 'BASE Version ...' and press 'OK'.



7.4 project tracking

The project tracking is a very important feature of *mailonizer*. It provides you the possibility to save mails to a customized folder, if a search pattern is found in the email subject or body.

7.4.1 project tracking form

The screenshot shows the 'Tracking' dialog box with the following settings:

- Tracking properties
- choose a filter by name: project
- choose filter type: pattern search
- track outgoing mail
- track incoming mail
- filter active
- type in pattern to trigger the filter: [P
- type in pattern to finish the filter:]
- folder to save tracked mails: D:\mail\
- Buttons: OK, Cancel, Show Folder, Set Folder
- quick help: activate this to filter the incoming mail

This is the form to control the filter settings for tracking mails.

7.4.1.1. filter name

The name of the filter is set by the name of the combo box. In this case it is project, so the folder will be named 'project'

7.4.1.2. filter type

There are 2 types of filters you can choose from. The types are 'pattern search' or 'email search'.

7.4.1.2.1. pattern search

'pattern search' means the program searches in the subject and the body for the pattern to trigger and finish the filter.

7.4.1.2.2. email search

'email search' means the program searches the email addresses. If the pattern to trigger the filter is found, the mail will be duplicated in the folder.

7.4.1.2.3. exact multi search

'exact multi search' means the program searches for the exact keywords given in the mask.

The program searches the subject, the body and the HTMLBody for the appearance of the given keywords.

See 'best practice' for detailed information.

All texts are converted to big capitals, you don't need to keep this in mind.

7.4.1.2.4. near multi search

'exact multi search' means the program searches for the exact keywords given in the mask.

The program searches the subject, the body and the HTMLBody for the appearance of the given keywords. The near multi search tries to catch words which looks similar.

See 'best practice' for detailed information.

All texts are converted to big capitals, you don't need to keep this in mind.

7.4.1.3. track incoming mails

This will run the filter on received mails.

7.4.1.4. track outgoing mails

This will run the filter on sent mails.

7.4.1.5. filter active

This enables the filter.

7.4.1.6. type pattern to trigger the filter

This is the start sequence which triggers the filter. Move your mouse to the textbox to see a tool tip with example. This pattern search will be broken at the first occurrence, so a second identic pattern will not be detected.

If this pattern is found, **mailonizer** searches for the end pattern below.

7.4.1.7. type pattern to finish the filter

This is the end sequence which finishes the filter. Move your mouse to the textbox to see a tool tip with example.

If this pattern is found, **mailonizer** will save the mail in a folder. The folder name is the string between start pattern and end pattern.

7.4.1.8. show folder

To see what mails were tracked, call the command "**Show Folder**". This will open the folder, if exists.

In the example below the folder gets the name "**bug**" his is the end sequence which finishes the filter. Move your mouse to the textbox to see a tool tip with example.

If this pattern is found, **mailonizer** will save the mail in a folder. The folder name is the string between start pattern and end pattern.

7.4.1.9. set folder

You want to change the default folder to save your filtered mails. So click on 'set folder' and choose an alternative folder.

But be aware that the new folder is quick enough to handle the saved data, otherwise your system will be very slow (e.g. 10 MBit Ethernet connection)

7.4.1.10. rename filter

If you type in another name for the filter the folder will be changed. The old folder, if it does exist, will not be deleted. There will be a new folder, if there is a new file to track.

7.4.1.11. number of filters

The number of filters in the FREEARE Version is 1, the BASE version has no filter, but you can increase this number with a PRO license key up to 5.

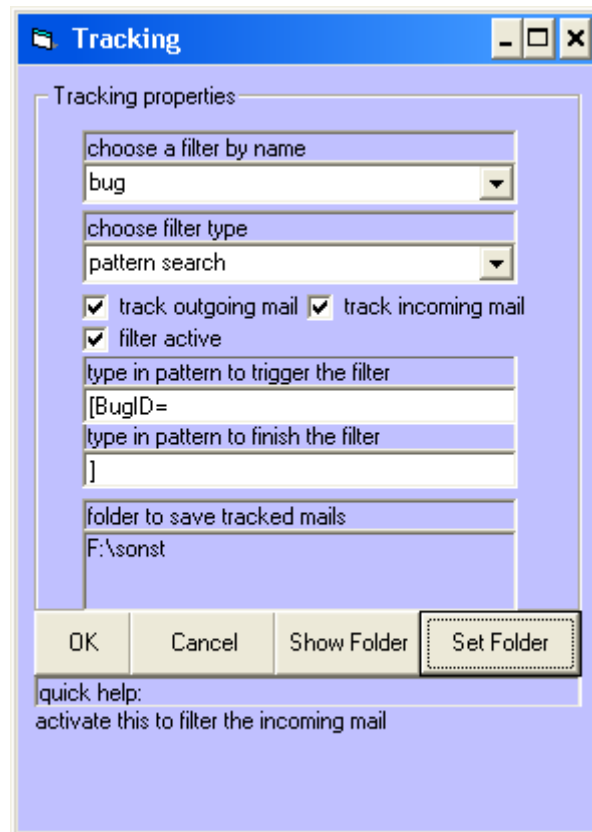
The EXTREME license key will provide you a set of 10 parallel filters !

7.4.2 best practise

Example:

You have to deal bugs which are automatically send to your pc. The subject always contains the following data:

“[BugID=367543] [context=GUI] [customer=DC]”



If you have a EXTREME VERSION you would even be able to track for “**context**” an “**customer**” in the same way, because there are up to 10 parallel filters available !

7.4.3 Examples for filtering

Ebay	start pattern '&item'	end pattern: '&'
Projekt	start pattern '[P'	end pattern: ']'
Product	start pattern '[Product'	end pattern: ']'
XML Tag	start pattern '<[tag]'	end pattern: '>'
HTML Pages	start pattern '<TITLE>'	end pattern: '</TITLE>'
Release	start pattern '[Release'	end pattern: ']'
Telekom	start pattern '(Buchungskonto:'	end pattern: ')'
1und1	start pattern 'Rechnung'	end pattern: 'vom'

As you can see, there are lots of possible use cases to let **mailonizer** do the work !

Visit our homepage to learn more about customized filters !

7.4.4 keyword search

mailonizer depends on a given structure in a mail subject or mail body. If the structure is not reliable, **mailonizer** can't do a reliable work using filter type 'pattern search' and 'email search'.

You will get the best results, if you filter automatically generated mails, because they generate a very reliable structure. There are a lot of database applications which are capable of sending a mail at a certain event. Speak with your database partner !

You will get a problem each time, you don't have a reliable partner, sending you the mails to be filtered.

mailonizer helps you by providing 2 new search types, which are different.

'exact multi search' and 'near multi search' do compare a list of given keywords against the words in the mail. Both can handle up to 10 keywords and more.

7.4.5 exact multi search

So, if your not sure about your mail partner, you may filter the mail with a list of keywords, separated by space, where each keyword needs to appear exactly like specified.

Because of the missing ID the new folder will be build form the keywords.

7.4.6 near multi search

So, if your not sure about your mail partner, you may filter the mail with a list of keywords, separated by space, where each keyword needs to appear nearly like specified. This is a common function to compare address databases

The function is called Levensthein distance.

The distance counts the steps, which you need to change word **a** to word **b**.

The maximum distance **mailonizer** accepts is 1, that means that one capital in a word may be added, deleted or changed.

e.g.

a) You search for Levensthein, but your partner wrote Levenstein. Deleting 'h' means a distance of 1.

b) You search for Levensthein, but your partner wrote Levingsthein. Changing 'e' to 'i' means a distance of 1, deleting the 'g' means a distance of 1, in total a distance of 2.

The example a) will be filtered, the example b) will be ignored

The distance will be calculated for each given keyword. If each distance is less or equal 1 then the mail is filtered.

Because of the missing ID the new folder will be build form the keywords.

7.5 language settings

Version 1.2 provides the possibility to create your own language file !

The language is simply controlled by a INI file, which is placed in your user directory. There are two languages inside by default, german and english. English is the default language, when you install the software.

7.5.1 change language

You can easily change the language in 3 steps. We assume you are an italian person.

- 1) Find the language file in the User directory
"C:\Documents and Settings\[BuildUserAccount]\ApplicationData\Mailonizer\language.ini
- 2) Add your translation in a new section [ITALIAN] as follows

```
[ITALIAN]
Text_001="assistenza"
Text_002="Vattene!"
Text_003="opzione"
...
```

If you want to save time copy the complete [German] section

- 3) Change the language in the [INDEX] section

```
[Index]
language= ITALIAN
```

That's it ! Restart your mailonizer in a new language version !

Attention! Don't leave empty text fields, because translation ends there !

Instead of

```
Text_077=" "
```

Better use some blanks

```
Text_077=" "
```

8 Constraints

This will inform you what **mailonizer** is not able to do.

8.1 scheduler

mailonizer works with a scheduler. If you receive/sent and delete mails automatically on your system, there might occur a problem, if it's in between a time of 500 ms. In that case the deleted mail won't be saved to your harddisc.

8.2 Unhandled Outlook objects

mailonizer is not able to handle Outlook objects which are not class *oIMail*.

8.3 cpu usage

mailonizer is not able to save Outlook mails without consuming cpu. The more you send or receive mails and track them, the more cpu usage you will get. If you receive lots of spam mails, all will be saved and tracked. We don't see this as a problem of **mailonizer**. You should install a spam filter !

8.4 limits

There are limits in the FREEWARE version, which can be disabled by ordering a PRO VERSION, see chapter "**ORDER**". It's just as much features, as I can stand.

8.5 redemption.dll

mailonizer uses redemption.dll Version 3.3.0.282, see reference /1/. In order to help you with component constraints, see FAQ page.

8.6 mail in mail

mailonizer cannot handle mails which are copied in another mail. This will be part of a next version.

8.7 Outlook versions

mailonizer will inform you about a not provided Outlook versions.

8.8 OS versions

mailonizer will inform you about a not provided OS versions.

8.9 64 bit OS

mailonizer does not provide a 64 bit OS versions.

8.10 Subfolders

mailonizer is designed to handle only the main infolder (german called 'Posteingang') and outfolder (German 'Postausgang'). Subfolders, which can be build by users, are not scanned.

8.11 keyword lists

mailonizer will compute each keyword list of each filter against each new mail. Be aware of a your configuration to avoid useless cpu usage.

8.12 Blackberry Usage

mailonizer is triggered by new mails (state is unread). If you read mails via your blackberry and set them to state unread, **mailonizer** is no longer able to save them.

9 Known problems

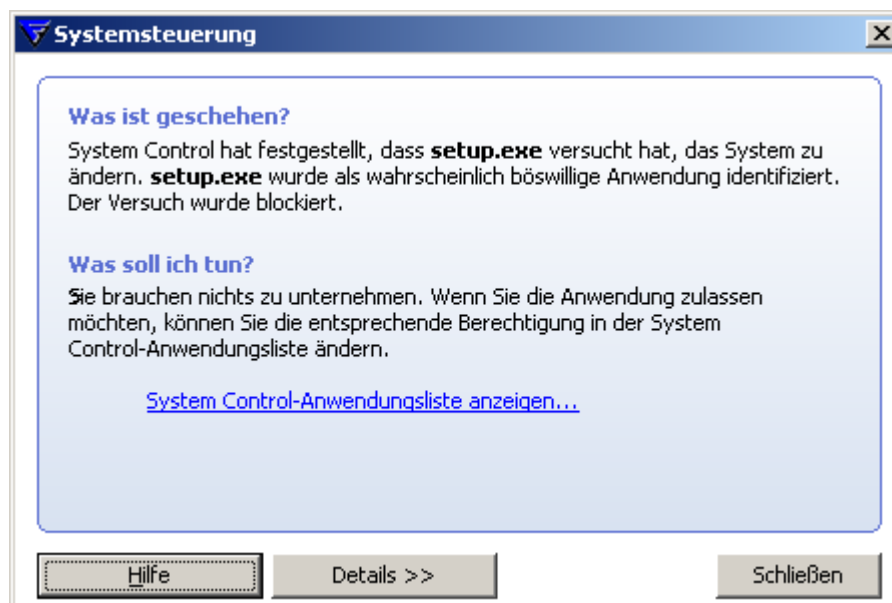
We are always looking to provide the best results to our customers. So have a closer look to the page

<http://www.mailonizer.de>

to see actual news and known problems.

9.1 setup.exe is blocked

Secure Sites sometimes block the setup.exe as a suspicious application. You can solve this by adding the setup to the known applications.



9.2 old harddiscs

Old harddiscs appear to work slower if there are folders with a couple of subfolders.

9.3 Network space

Saving the mails in a network is a fine solution because mostly there are backup solutions installed on the server.

This archiving needs to have a stable and reliable network connection.

9.4 send / receive

In a few cases the automatic send/receive at the beginning doesn't work.